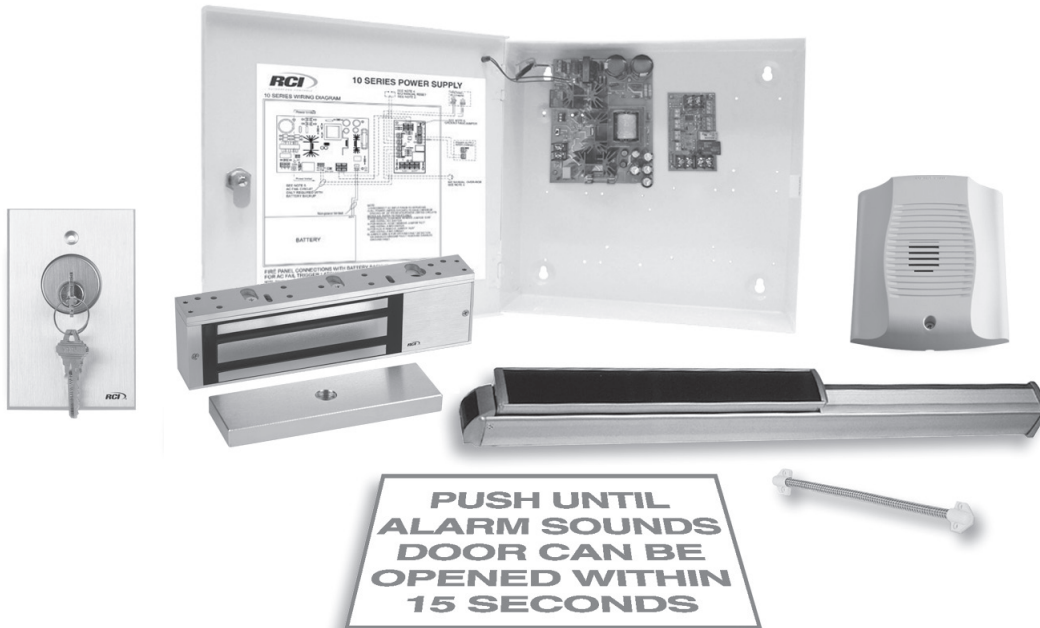




*In or Out...we make it Easy!®*



Some components may not be exactly as shown.

## ACS-QS1

### Locked Mode

Door remains in the locked position at all times.

### Unlocked Mode

When the exit device switch is engaged, the Sounder immediately sounds, the door will open in 15 seconds. After 20 seconds, the Sounder stops and the ACS-QS-1 System will automatically re-lock.

### Override-Reset Mode

An authorized user may override the alarm and unlock the door by turning the keyswitch. Turning the keyswitch in the opposite direction will reset the system so that the door may be relocked.

### Life Safety

Because the EML (electromagnetic lock) is tied to the fire alarm panel, the door will unlock immediately in the event of a fire and egress is enabled by depressing the mechanical exit device.

## ACS-QS2

### Locked Mode

Door remains in the locked position at all times.

### Unlocked Mode

When the exit device switch is engaged, the Sounder immediately sounds, the door will open in 15 seconds. After 20 seconds, the Sounder stops and the ACS-QS-2 System must be manually relocked.

### Override-Reset Mode

An authorized user may override the alarm and unlock the door by turning the keyswitch. Turning the keyswitch in the opposite direction will reset the system so that it is in the "armed" position.

### Life Safety

Because the EML (electromagnetic lock) is tied to the fire alarm panel, the door will unlock immediately in the event of a fire and egress is enabled by depressing the mechanical exit device.

## ACS-QS3 (nuisance delay)

### Locked Mode

Door remains in the locked position at all times.

### Unlocked Mode

When the exit device switch is engaged and held for 3 seconds continuously, the Sounder immediately activates. If the device is released before the 3 second time frame, the system will remain armed. Following this 3 second nuisance delay, an irreversible timer will commence which will unlock the door after an additional 12 seconds has elapsed. After 20 seconds of the timer being active, the Sounder stops and the system must be manually relocked.

### Override-Reset Mode

An authorized user may override the alarm and unlock the door by turning the keyswitch. Turning the keyswitch in the opposite direction will reset the system so that it is in the "armed" position.

### Life Safety

Because the EML (electromagnetic lock) is tied to the fire alarm panel, the door will unlock immediately in the event of a fire and egress is enabled by depressing the mechanical exit device.

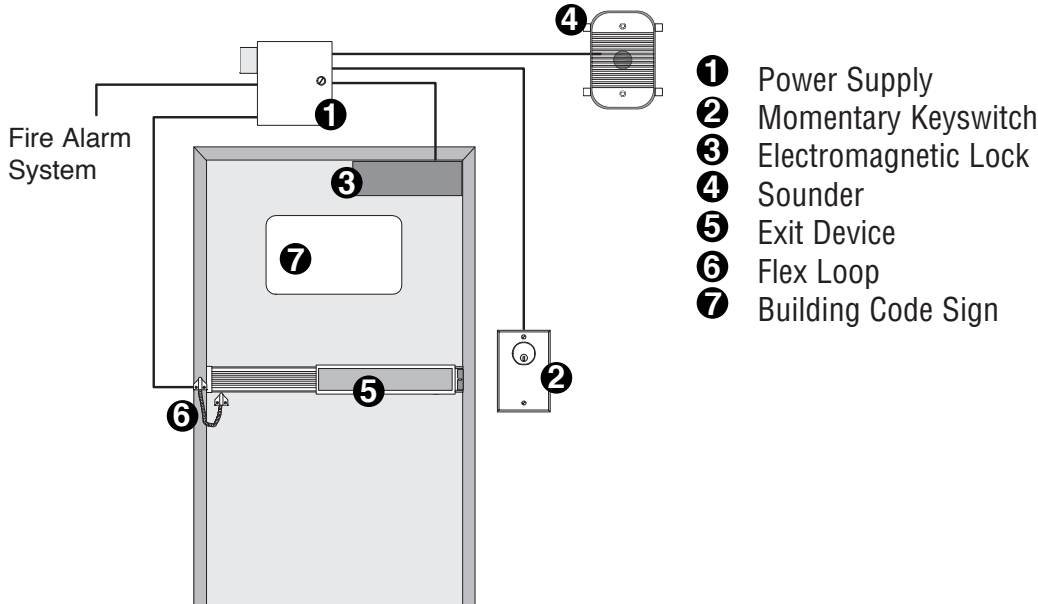
# Specifications

# ACS-QS1, 2, 3 Delayed Egress

QuickSystems®



*In or Out...we make it Easy!®*



Delayed Egress QuickSystems® 1, 2, 3	
Component	Description
10-1 FPD (1.5A at 12/24VDC)	RCI Power Supply with Fire Release Relay (Timer options included)
960-MO/MO x 28	Momentary Keyswitch with 2 SPDT Switch (less cylinder)
8310 x SCS/DSS x 28	8310 Electromagnetic Lock with SCS/DSS Features
914	Sounder
1200A x SS1 x 28	36" Exit Device with SPDT Switch Module
9507-12	12" Flex Loop
BC1M*	Building Code Sign — PUSH UNTIL ALARM SOUNDS DOOR CAN BE OPENED WITHIN 15 SECONDS
BC2M*	Building Code Sign — EMERGENCY EXIT UNLOCKED BY FIRE ALARM
ISQS123	QuickSystems® 1,2,3 Schematic/Risers Diagram Installation Instructions

\*Clear mylar provided is standard. Alternatives available upon request.

## Timing Sequences

System	Nuisance Delay	Opening Time	Relock Mode
ACS-QS1	0 sec	15 sec	Automatic relock 20 sec after activation
ACS-QS2	0 sec	15 sec	Manual relock
ACS-QS3 NFPA	3 sec	12 sec	Manual relock

**NOTE:** Specifications are subject to change without notice. National Building Code requires that if more than one Quick System is used in a building, it is expected that one override/reset switch will release and reset all devices simultaneously. Wire supplied by others – recommended size 18-16 AWG (RCI wire gauge chart included with installation instructions).

Please contact our customer service department at 1-800-265-6630 for inquiries on customized systems.

RCI also offers a complete line of Electromagnetic Locks, Electric Strikes, Electric Locks, Power Supplies, Switches, Keypads & Readers, Exit Devices, Systems & Door Hardware.