

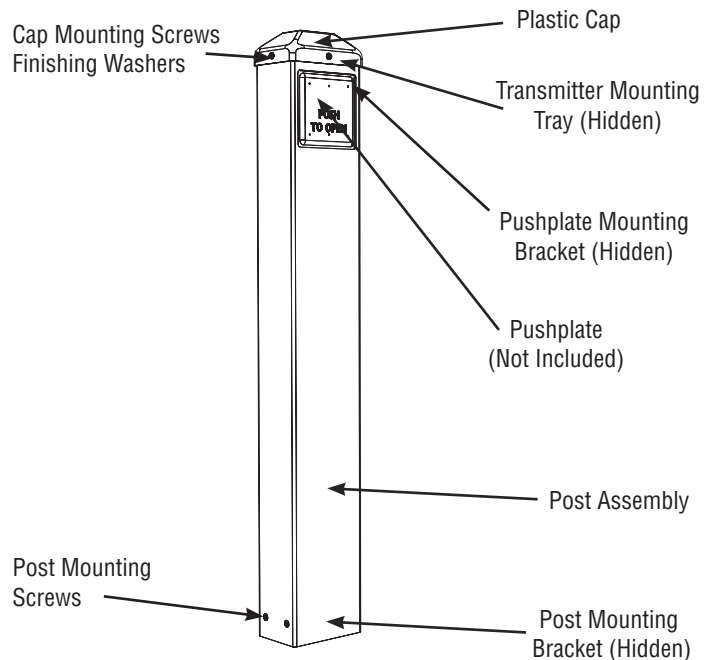


## Bollard/Mounting Post

*In or Out... we make it Easy!®*

### Description

The Bollard (Black-9BOLLBLPC, Silver-9BOLLSPC & Bronze-9BOLLBRPC) is used for mounting pushplates that activate automatic doors. It will accept RCI's 4 1/2" Square Pushplate (946 series), 4 3/4" Square Pushplate (946 series), Dual Vestibule Pushplate (947 series) and 4 1/2" Round Pushplate (950 series). The post is made of durable carbon steel and the mounting bracket is made of stainless steel for strength. It can be mounted on either existing concrete or newly poured concrete.



### Specifications

Description	Specification
Dimensions (with cap attached)	41 1/2"H x 6 1/4" W x 4 1/4"D
Material	Powder-Coated (Inside and Out) Carbon Steel UV-Resistant ABS Plastic Stainless Steel
<ul style="list-style-type: none"> <li>• Post</li> <li>• Cap</li> <li>• Bracket</li> </ul>	
Pushplate Options	4 1/2" Square Pushplate, 4 3/4" Square Pushplate, Dual Vestibule Pushplate and 4 1/2" Round Pushplate
Weight	35 lbs (16 kilos)
Color	Black, Bronze, Silver
Hardware (Included)	Expansion Anchors (4), Lock Washers (4) & Nuts (4) Screws (3) & Finishing Washers (3) Screws (4)
<ul style="list-style-type: none"> <li>• Bracket</li> <li>• Cap</li> <li>• Pos</li> </ul>	

# 9BOLL Installation Instructions (Continued)

## ⚠ Precautions

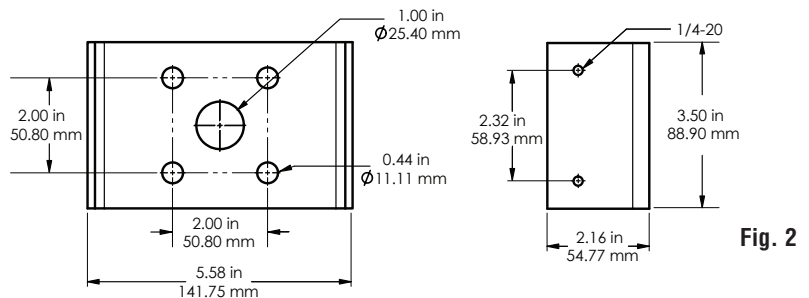
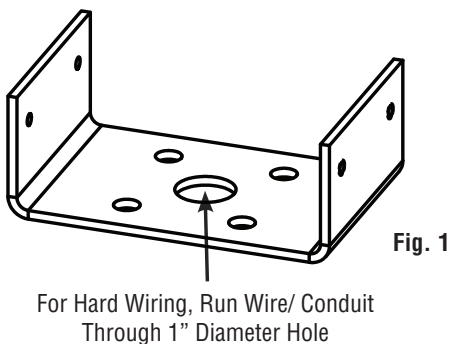
- Shut off all power before attempting any wiring procedures.
- Maintain a clean & safe environment when working in public areas.
- Constantly be aware of pedestrian traffic around the door area.
- Always stop pedestrian traffic through the doorway when performing tests that may result in unexpected reactions by the door.
- Always check placement of all wiring before powering up to insure moving door parts will not catch any wires and cause damage to equipment.
- If applicable, ensure compliance with all applicable safety standards (i.e. ANSI A156.19 / A156.10) upon completion of installation.
- All repairs and/or component replacements must be performed by RCI. Unauthorized disassembly or repair:
  - May jeopardize personal safety and may expose one to the risk of electrical shock.
  - May adversely affect the safe and reliable performance of the product resulting in a voided warranty.

## Pre-Installation Instructions

1. When preparing to wire multiple devices together for a 'system' configuration, it is best to ensure the correct operation of each device independently before starting, to help reduce troubleshooting time later in the event of a discrepancy.
2. Prior to installing any equipment, ensure correct line voltage and stability. When applying equipment on a new installation utilizing new electrical supply circuits, always ensure correct line voltage exists and is stable. Remember to shut the power back off after this is checked and before performing any wiring to the system.

## Mounting Bracket

The Bollard is designed to house a pushplate used to activate a door by either a remote controlled transmitter or hard wired directly to the door control. If the door is hard wired, pass the wire through the 1 inch diameter hole in the mounting bracket. See Fig. 1 and 2.



# 9BOLL Installation Instructions (Continued)

## Attach Mounting Bracket (Expansion Anchors)

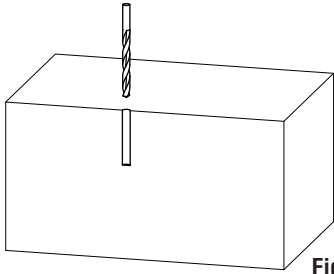


Fig. 3

1.a) Mark and drill 3/8" diameter hole in four locations. See Fig. 3.

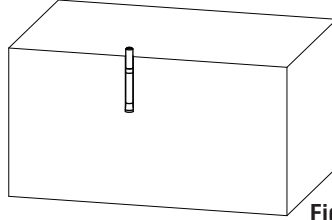


Fig. 4

1.b) Hammer in and set anchor in four hole locations. See Fig. 4.

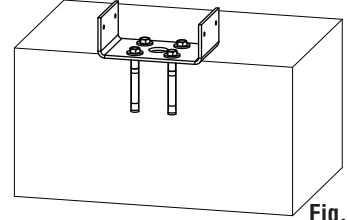


Fig. 5

1.c) Install and tighten nuts to secure mounting bracket. See Fig. 5.

## Attach Post to Mounting Bracket

Align post to mounting bracket and attach post to mounting bracket with four post mounting screws. See Fig. 6.

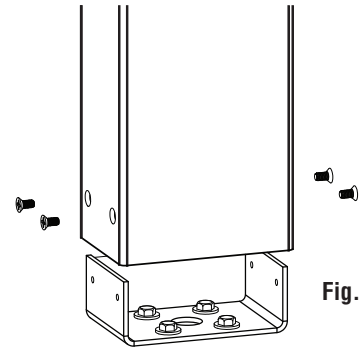
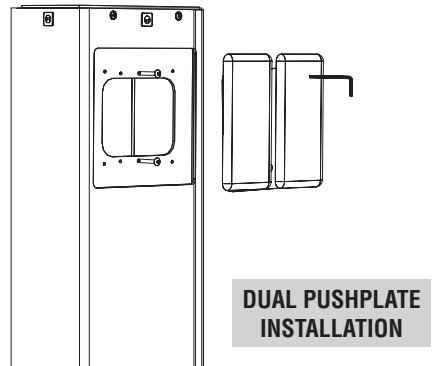
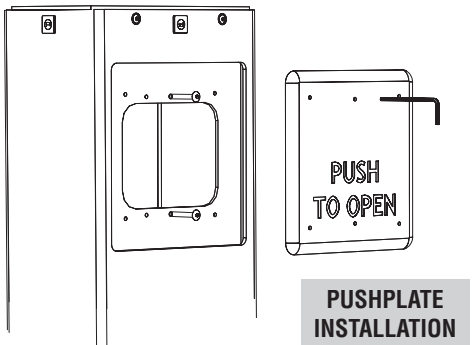


Fig. 6

## Install Pushplate

Thread the pushplate screws into the mounting box leaving a majority of the screw exposed. Attach the pushplate to the mounting screws, then use the hex key provided to fully tighten the screws. Refer to the appropriate Pushplate User's Guide for detailed installation and setup instructions.

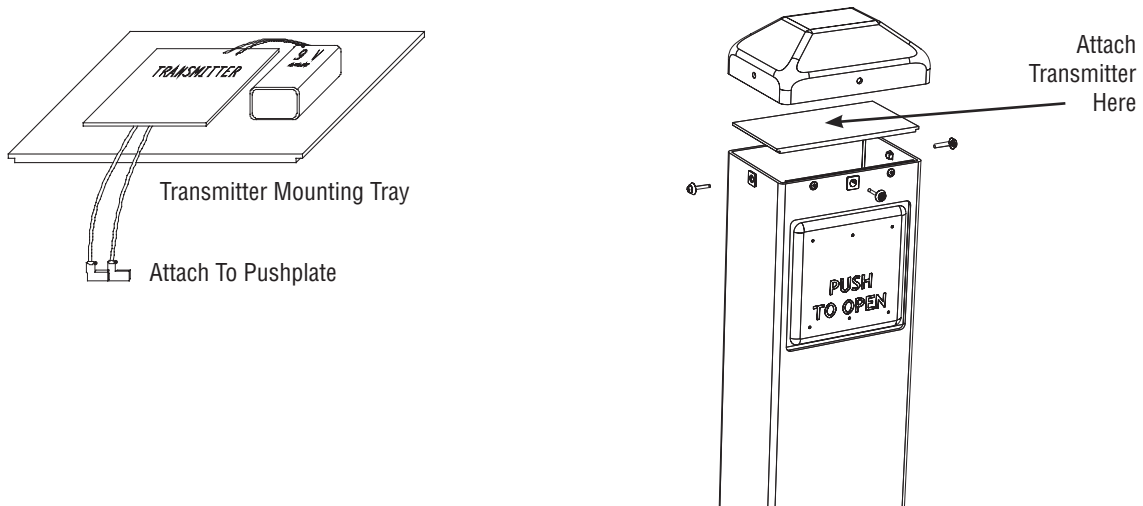


# 9BOLL Installation Instructions (Continued)

## Attach Transmitter

2. a) If using the transmitter for this application, attach transmitter to mounting tray with velcro pad included in the package. Hardwired systems do not require this step.
2. b) Attach plastic cap to top of the post with three cap mounting screws.

**CAUTION:** if the transmitter is allowed to hang down inside the bollard, erratic operation may occur.



**NOTE:** Please deliver all installation instructions and End User Guides to the end-user upon completion of the installation.