

# 5 Series

## NO-CUT CYLINDRICAL & MORTISE STRIKES



Low Energy  
26mA Auto-Sensing  
12-24VDC



Strength  
1500lb Static  
70 ft-lb Dynamic



Warranty  
5 Year  
Limited Warranty



Door Frames  
Designed To Fit  
ANSI-Prepped Frames



Mode  
Available In  
Fail-Secure & Fail-Safe

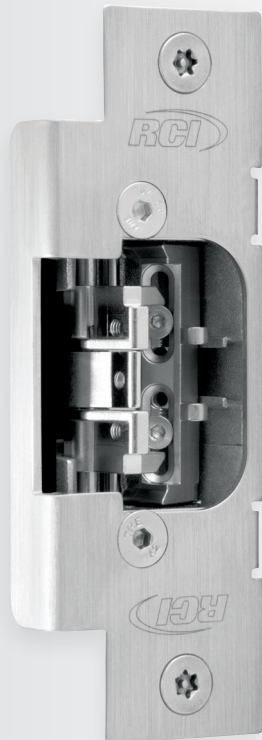


Latch Monitor  
Models Available



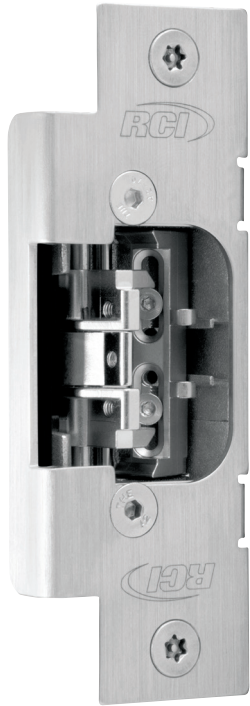
Fire-Rated  
3 Hour Models  
Available

Designed to fit ANSI-prepped frames.



# 5 Series

## NO-CUT CYLINDRICAL & MORTISE STRIKES



### Cylindrical Dimensions

Faceplate: 1-1/4"W x 4-7/8"H (32mm x 124mm)  
Insert Depth: 15/16"D (24mm)



### Mortise Dimensions

Faceplate: 1-1/4"W x 4-7/8"H (32mm x 124mm)  
Insert Depth: 1-1/8"D (29mm)

### Common Features

- Featuring micro-motor technology
- Designed for ANSI-prepped frames
- 1/16" horizontal adjustment
- Plug-in wire connectors
- Runs cool to the touch – no suppressor kit needed
- Non-handed – for use with right and left handed doors

### Cylindrical Features

- Accommodates 5/8" latch projection
- 1/2" vertical adjustment

### Mortise Features

- Accommodates 3/4" latch projection
- Fully adjustable latchbolt & deadlatch within the strike cavity

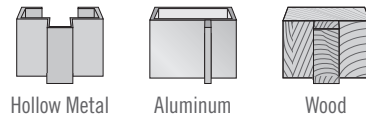
### Options

- Latch monitor (LM) and fire-rated (F) models available

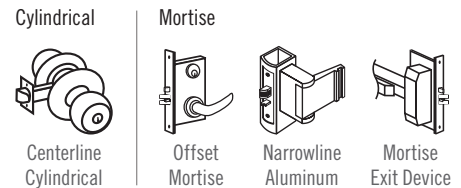
### Applications

- Commercial centers
- Industrial buildings
- Educational facilities
- Retail outlets
- Health care facilities
- Office complexes

### Frame Type



### Door Lock Type



### Certifications & Testing

- UL 1034 burglary-resistant Listed
- Fire-rated (F) models: CAN/ULC S104, UL10C & NFPA 252, 3 hour fire-rating Listed

SECURITY



### Cylindrical

Model	Mode	Fire-Rated	Latch Monitor	Volts*	Duty	Amps <sup>†</sup>
5314	Fail-Safe			12–24VDC	Continuous	26mA
5314LM	Fail-Safe		•			
5114	Fail-Secure					
5114LM	Fail-Secure		•			
F5114	Fail-Secure	•				
F5114LM	Fail-Secure	•	•			

### Mortise

Model	Mode	Fire-Rated	Latch Monitor	Volts*	Duty	Amps <sup>†</sup>
5364	Fail-Safe			12–24VDC	Continuous	26mA
5364LM	Fail-Safe		•			
F5164	Fail-Secure	•				
F5164LM	Fail-Secure	•	•			

\*Overheated or burnt PCBs caused by incorrect input voltage will not be covered under warranty. Maximum voltage must not exceed the rated voltage.

<sup>†</sup>Steady state current. 35mA peak.