

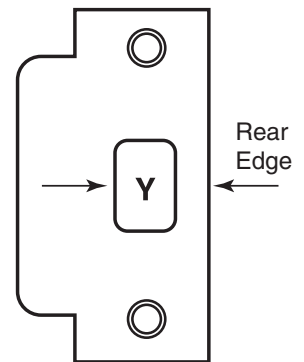


In or Out... we make it Easy!

INSTRUCTIONS

1. Prepare the door jamb (frame) using the dimension chart on back.
2. If required, install the standard mounting tabs and shims (supplied) using the (4) 12-24 X 3/8" zinc plated screws provided or weld directly to the frame.
3. To determine the Strike Shim positions, measure dimension "Y" (See Figure #1) from flat latch face to rear edge of electric strike preparation. Rearrange Strike shims (if necessary, see Figure #2) according to the chart below.

| MEASUREMENT "Y" | LOCK TYPES | STRIKE SHIM POSITION |
|--|---|---|
| 3/4" to 13/16" 19mm to 21mm .75in to .825in | Cylindrical locks only on misaligned doors or improper lock prep locations. | Locate both shims in position #S1 See Figure #2. |
| 13/16" to 15/16" 21mm to 24mm .825in to .95in | For all locks (except Falcon Mortise locks). | Locate one shim in position #S1 and one in position #S2 <i>Factory supplied in this mode.*</i> |
| 15/16" to 1-1/16" 24mm to 27mm .95in to 1.06in | For Mortise locks only on misaligned doors or improper lock prep locations or Falcon Mortise locks. | Locate both shims in position #S2 See Figure #2. |



"Y" Dimension Mortise Lock Mechanical Strike Plate on Frame

Figure #1

IMPORTANT

For MORTISE LOCKSETS, remove the split pivot shim that is attached to the inside of the strike pivot.
For CYLINDRICAL LOCKSETS, leave this split pivot shim in place. (See Fig. #2)

4. Once shims have been located in the correct position, reassemble (if required, see Figure #2) the electric strike by inserting the two (2) thru-bolts through the rear of the mounting/face plate, shims, electric strike, and into the holes tapped in the stainless steel face plate, and tighten.

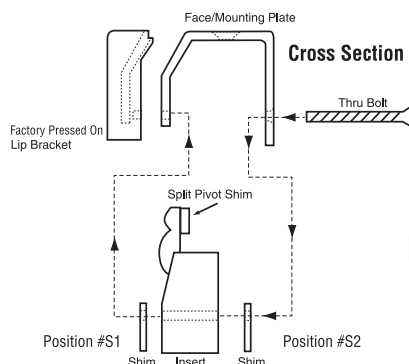


Figure #2

2 SERIES ELECTRIC STRIKE ASSEMBLY DIAGRAM

- (1) As shown 1 shim in position #S1 and 1 shim in position #S2.
- (2) 2 shims in position #S1.
- (3) 2 shims in position #S2.

Note: Both shims must always be used.

When installing an electric strike on an inactive door of a set of double doors, it can be treated the same as a frame installation in most situations. For more information contact the Technical Service Department.

TEMPLATE For Models 2114 / 2314 / 2124 / 2324 / 2134 / 2334

- Connect the wires from the low voltage side of the 12V or 24V transformer or power supply to the screw terminals on the electric strike. NOTE: Polarity is NOT observed, therefore crossed wires are not a problem. (See Fig. #3)
- Install the electric strike in frame attaching it with two (2) #12-24 x 3/8" stainless machine screws provided.

IMPORTANT NOTE TO INSTALLERS

DO NOT install electric strikes so that the deadlocking latches or triggers on mortise locks enter into the strike cavity.

Once installation is complete, check to make sure that door has a small amount of movement or "play". If door has no movement, realign the shims to allow for this.

2 SERIES MS OPTION WIRING INSTRUCTIONS

Connect proper voltage to terminals 1 and 2, polarity is not observed.

Terminals 3 (N.C.), 4 (COM) and 5 (N.O.) are shown in the normal "Not Installed" condition.

The contacts will change status when the paddle switch is depressed by the lock latch or when the pivot is in the open position.

Note: If door status is required, we recommend the use of an external door position contact switch interfaced with this option.

MS OPTION ELECTRICAL SPECIFICATIONS

SPDT contacts
5 A @ 250V AC
Rated for 10,000,000 cycles
UL Listed

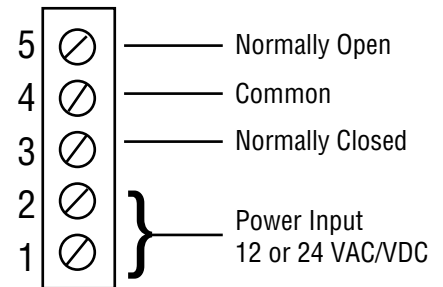
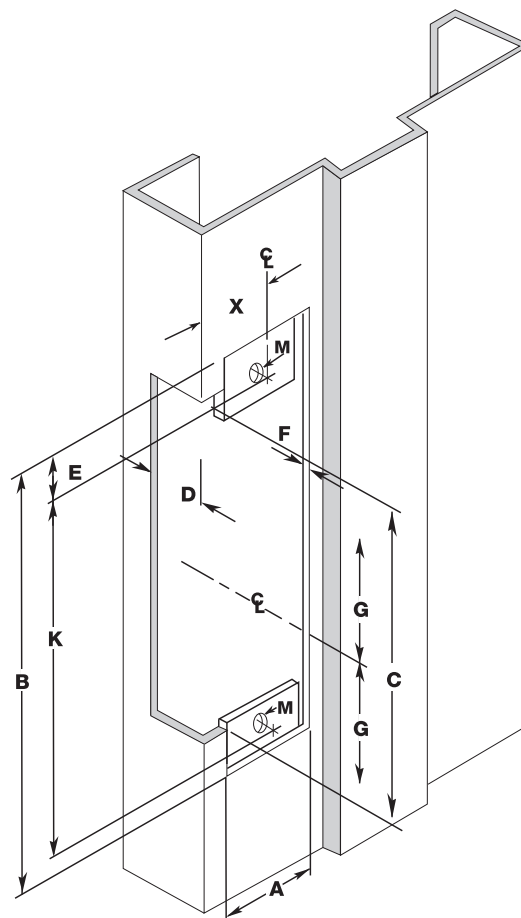


Figure #3

| MEASUREMENT | FRACTIONAL INCHES | DECIMAL INCHES | METRIC mm |
|-----------------------------|--|----------------|-----------|
| A | 1-1/4" | 1.250 | 31.75 |
| B | 4-7/8" | 4.875 | 123.8 |
| C | 4-3/8" | 4.375 | 111.1 |
| D | 1-1/2" | 1.50 | 38.0 |
| E | 3/8" | 0.375 | 9.5 |
| F Faceplate Thickness | 1/8" | 0.125 | 3.0 |
| G | 2-3/16" | 2.188 | 55.55 |
| X | Vertical Centerline of Door Lock and Mounting/Face Plate | | |
| K | 4-1/8" | 4.125 | 105.0 |
| M | 12-24 | N/A | N/A |
| Total Strike Depth | 1-7/8" | 1.875 | 47.5 |

Dimension Chart



Dimensions not to scale.
Specifications are subject to change without notice.
Consult the factory for up to date template and installation instructions.