



In or Out... we make it Easy!®



950P45 & 950P6
4-1/2" or 6" Button
(114.3mm or 152.4mm)



950HP45 & 950H6
4-1/2" or 6" Button
(114.3mm or 152.4mm)



950H45 & 950H6
4-1/2" or 6" Button
(114.3mm or 152.4mm)

Features & Benefits

- 950-45 model features large 4-1/2" (114.3mm) diameter button with faceplate designed for 2" x 4" (50.8 x 101.6mm) switch boxes
- 950-6 model features large 6" (152.4mm) diameter button with faceplate designed for 4" x 4" x 1-1/2" (101.6 x 101.6 x 38.1mm) junction boxes
- Available in multiple styles to meet specifications and customer requests
- Momentary action switch standard
- Stainless steel faceplate
- Tamper-Resistant
- Perfect for any wall application

Highlights

- Text and logo are baked onto the surface for maximum durability
- Stainless Steel (scratch/scuff resistant)
- Ideal for Vandal-Prone Areas
- Lifetime Warranty

Stainless Steel Switches

These popular stainless steel switches meet the highest construction and performance standards. Dependable, responsive and easy to install, these assisted door switches are ideal for a broad range of door automation applications.

Comes in the standard 4.5" (114.3mm) diameter as well as a handy 6" (152.4mm) diameter for high visibility and easy use.

Applications

- Handicap Areas
- Vandal-Prone Areas
- Vestibules
- Storefront
- Commercial
- Industrial
- Health Care

Optional Mounting Accessories

- 95045SUR 4.5" Surface Mount Box
- 95045FLU 4.5" Flush Mount Box
- 9506SUR 6" Surface Mount Box
- 9506FLU 6" Flush Mount Box
- 946DGPLATE . . Back Plate for Double Gang Electrical Box (4.5" & 6")

Options

- 950ESC45 Escutcheons (4.5")
- 950ESC6 Escutcheons (6")
- 946PLAST Plastic Mounting Box (6")

Finishes

- 32D . . . Brushed Stainless Steel (Standard)

Technical Specs

- 16 gauge, 304 2B Stainless Steel Faceplate
- 1/8" thick, Aluminum Back Plate
- Stainless Steel 6-32 x 1" and 8-32 x 1", Allen head mounting screws
- Cherry Switch: Single-pole, 15A, COM/NO/NC Contacts



RUTHERFORD CONTROLS
A DORMA Group Company

In or Out... we make it Easy!®

950 Series Family Of Products



**950P45
& 950P6**



**950HP45
& 950HP6**



**950H45
& 950H6**

950 Series Mounting Options



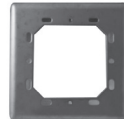
**9504SUR
& 9506SUR**
Round Surface
Mount Box



**9504FLU
& 9506FLU**
Round Flush
Mount Box



9464PLAST
Double Gang
Mount Box

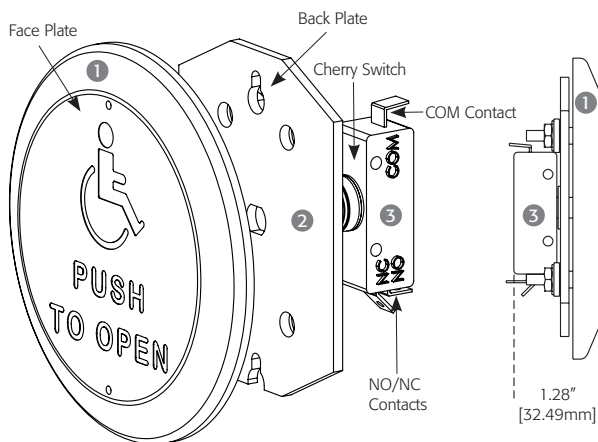


946DGPLATE
Double Gang
Electrical Box
Backplate



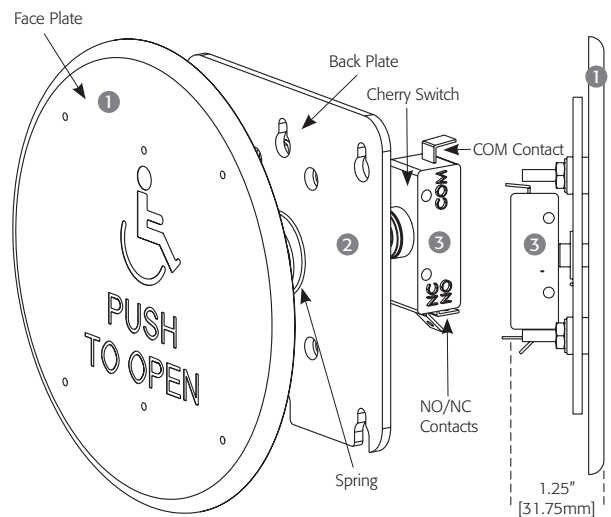
**950ESC45
& 950ESC6**
Round Escutcheon

4 1/2" Round Pushplate Details



- 1 Face Plate
- 2 Black Plate
- 3 Cherry Switch

6" Round Pushplate Details



RCI also offers a complete line of Electromagnetic Locks, Electric Strikes, Power Supplies, Switches, Keypads & Readers, Exit Devices, Systems & Door Hardware.